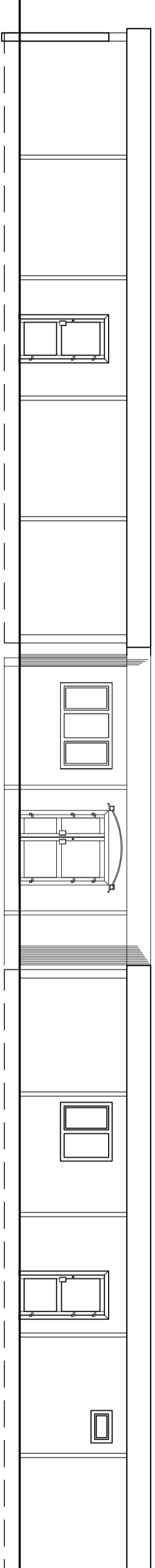


ELEVATION A - North West

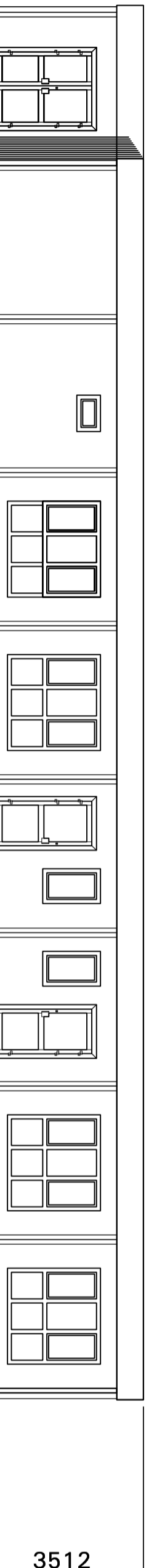
PHASE 1



ELEVATION B - North East

PHASE 2

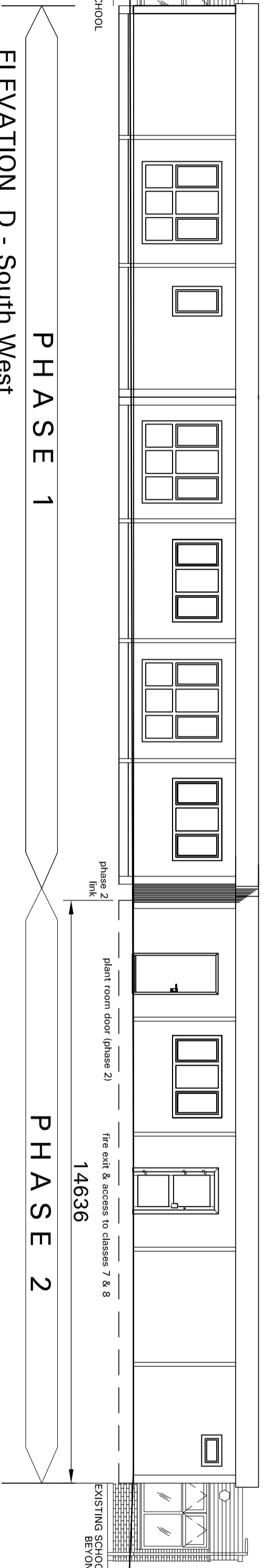
PHASE 1



ELEVATION C - South East

PHASE 2

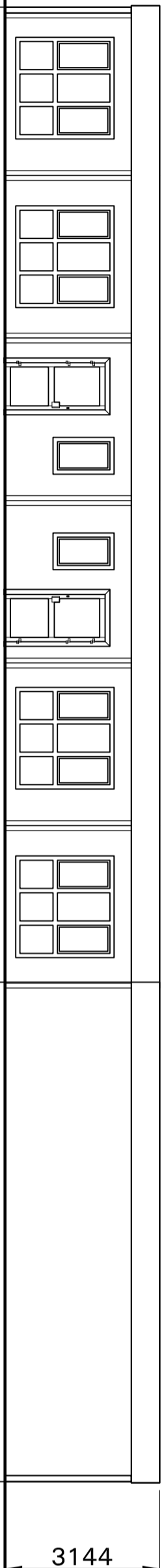
PHASE 1



ELEVATION D - South West

PHASE 1

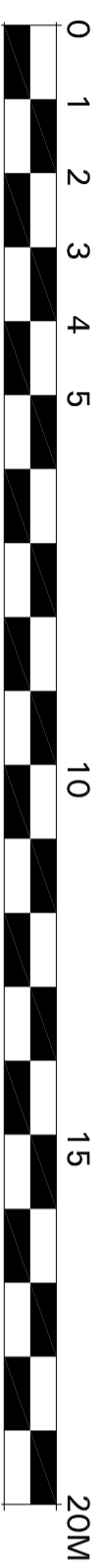
PHASE 2



ELEVATION F - North West Courtyard

PHASE 2

PHASE 1



Materials & Colour Scheme

- Walls :** External wall cladding of Dobel 200XT Plastisol Steel. Colour finish BS 10 C 31. Colour finish on some panels Poppy Red BS 04 E 53
- Fascias :** Fascia finished in Dobel 200XT Plastisol Steel. Colour Honesty - BS 10 C 31
- Roof :** One piece per module structural insulated composite panel finished with Aluzinc profiled sheet externally
- Columns :** Structural columns painted to match walls
- Windows :** UPVC frames - double glazed low energy glass. Colour finish White. BS 00 E 55
- Rainwater pipes :** Slate Grey pvcu ref 18825
- Doors :** Plant Room door - Dobel 200XT Colourcoat steel covered flush door in satin anodised aluminium frame - Colour - Poppy Red BS 04 E 53 for Phase 1, Honesty BS 10 C 31 for Phase 2
 Other doors polyester powder coated aluminium, with powder coated steel frames. Colour - White BS 00 E 55

NOTE RE COLOURS: BS 10C31 is known by different names from different suppliers, ie 10C31 Buttermilk OR 10C31 Honesty.

PTK DESIGN NOTE:

- For Phase 1 only -
- Switch on AEXISTELEV layer
- Switch on APHASE1ELEV layer
- Switch off APHASE2 layer
- For Phase 2 also -
- Switch off AEXISTELEV layer
- Switch on APHASE2 layer



Client
Leeds City Council

Project
**Blenheim Primary School
 Two-Phase Extension**

Drawing
**Proposed Elevations
 PHASE 2**

Portakabin Limited
 Huntington
 York YO32 9PT
 T: 01904 611655
 F: 01904 611644
 W: www.portakabin.co.uk

Scale	1:100 @ A2	Date	25.05.10	Drawn By	D.Gain/SA
SAP No.	400011205			Rev.	A
Drawing No.	U1880/32				